



WT655 AND WL655 WEIGHTS

All of our WT655 and WL655 Weights (Yellow, Black, Orange) are shipped and delivered as follows:

8 each or fewer: Individual boxes via USPS or Fedex. If you order 8 weights, you will receive 8 boxes. While we ship your order at the same time, it is not unusual for the boxes to deliver on different days.

9 each or more: Individual boxes via USPS or Fedex or on a wooden pallet by truck freight. The final shipping method will be determined at our discretion based on the shipping services available. If you order 9 or more of these weights and cannot receive a full-size tractor/trailer truck at your location, you **MUST** advise us in advance.

Notes: For those ordering 3 weights per wheel, be advised that these will very likely extend past the edge of your tire. This can, and often does, create maneuverability issues. If ordered from us, these ship free so there is no savings other than your time to start with one per wheel and see how you like it before adding additional stacked weights. These weights do cover the wheel lug nuts and the weights must be removed before you can remove your wheel. Any issue, we offer 30 day returns with no questions asked. For Power King models we always recommend starting with just one weight per wheel. **See Images below:**



Figure 1

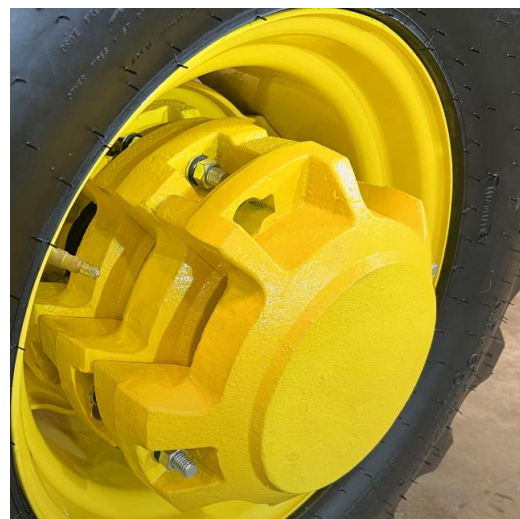


Figure 2

SKU: WT655-V-01

Verify Your Wheel
Learn More
60 pounds



4 Hole Mounting Pattern
Red Line is 7 1/2 inches
TractorWeights.com

SKU: WT655-O-01



Mounted on Wheel
TractorWeights.com

Figure 3



Figure 4 Two Weights Stacked

STANDARD MOUNTING USES 2 BOLTS PER WEIGHT.

See Images Below:

Typical Mounting of First Weight to Wheel

**Standard Hole Used to Mount
First Weight to Wheel.**

**Keyhole Slot Used to Mount
Second Weight to First Weight.**



**Keyhole Slot Used to Mount
Second Weight to First Weight.**

**Standard Hole Used to Mount
First Weight to Wheel.**

Figure 5 Mounting first weight to wheel

The two standard holes are used to mount the first weight to the wheel. Bolts go through back of wheel then through standard holes. Over length bolts shown here for clarity.



Figure 6 Mounting first weight to wheel uses the two standard holes

First Weight to wheel - Use the two standard holes to mount to wheel. **(1)**



Second stacking weight - Insert bolts in Keyhole slots of first weight then rotate second weight so that standard holes align with the keyhole slots of the first weight. **(2)**

Figure 7 Stacking Procedure